

54/92

# SWEETWATER SECTION TWO

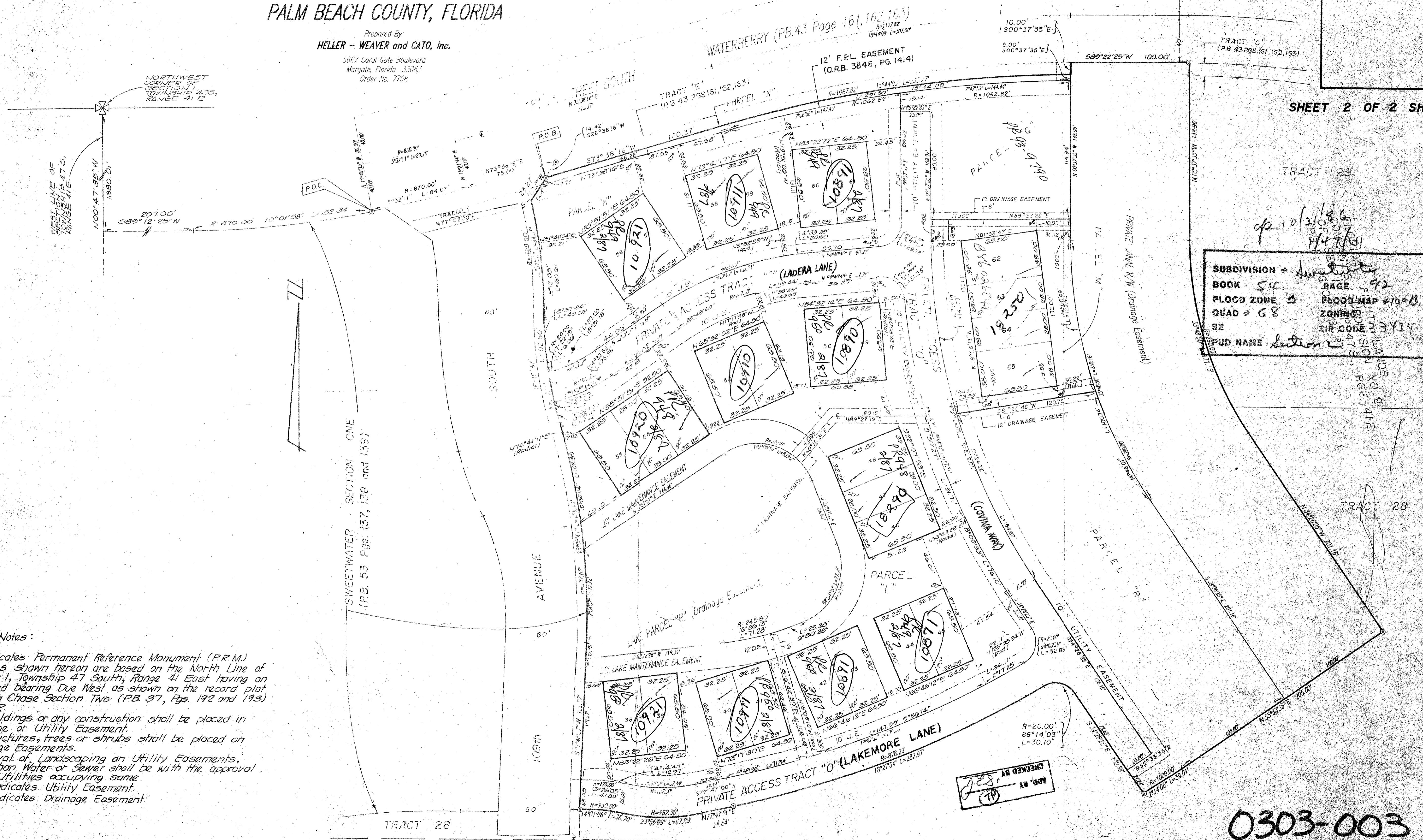
(A PORTION OF TRACT 7B-A, BOCA CHASE, RIVIERA P.U.D.)  
A REPLAT OF A PORTION OF TRACTS 28 and 29 "FLORIDA FRUIT LANDS COMPANY'S  
SUBDIVISION NO. 2" OF SECTION 1, TOWNSHIP 47 SOUTH, RANGE 41 EAST (P.B. 1 PG. 102 P.B.C.R.)  
PALM BEACH COUNTY, FLORIDA

GRAPHIC SCALE 1"=40'

92

Prepared By:  
**HELLER - WEAVER and CATO, Inc.**  
5667 Coral Gate Boulevard  
Margate, Florida 33309  
Order No. 7709

SHEET 2 OF 2 SHEETS



Subdivision information box:  
SUBDIVISION = Sweetwater  
BOOK 54 PAGE 92  
FLOOD ZONE 3 FLOOD MAP #100B  
QUAD 68 ZONE 1  
SE ZIP CODE 33434  
SUB NAME Section 2

- Surveyor's Notes:
- 1) © Indicates Permanent Reference Monument (P.R.M.)
  - 2) Bearings shown hereon are based on the North Line of Section 1, Township 47 South, Range 41 East having an assumed bearing Due West as shown on the record plat of Boca Chase Section Two (P.B. 37, Pgs. 192 and 193) P.B.C.R.
  - 3) No buildings or any construction shall be placed in Drainage or Utility Easement.
  - 4) No structures, trees or shrubs shall be placed on Drainage Easements.
  - 5) Approval of Landscaping on Utility Easements, other than Water or Sewer shall be with the approval of all Utilities occupying same.
  - 6) U.E. indicates Utility Easement.
  - 7) D.E. indicates Drainage Easement.

CHECKED BY: [Signature]

0303-003

FLORIDA FRUIT LANDS COMPANY'S SUBDIVISION  
NO. 2 OF SEC. 1, TWP. 47S., RGE. 41E. (P.B. 1 - PG. 102 P.B.C.R.)

SWEETWATER SECTION TWO 54/92

DRAWING NUMBER

DRAWING NUMBER

DRAWING NUMBER